



Cosmo Electronics Corp.

Investor Conference

December 11th, 2025

【stock symbol : 2466】



COSMO

Disclaimers



- This report might contain forward-looking statements which are based on the expectation that is reasonable when made. However, these statements are not guarantees and are subject to known, unknown risks or the uncertainties that are difficult to predict. The results may not prove to be accurate.
- Company assumes no obligation to update or revise any forward-looking statement, whether as a result of new information, future events, or otherwise, except as required by law.



Agenda



- Company overview
- Product lines
- Financial Results
- Strategy & Prospect
- Q&A



Company Overview



- Founded on May 25th, 1981
- Paid-in Capital :NT \$ 1,734,586,970
- Cosmo was listed on TWSE in 2001



Product Lines

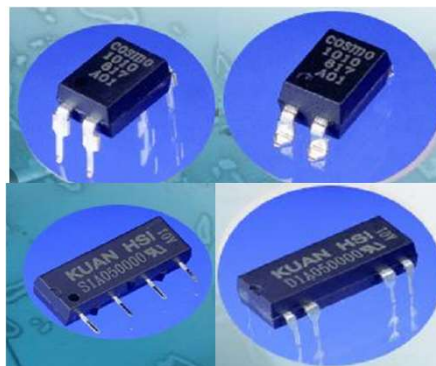


LED decoration



U.S.A Indonesia China

Optoelectronic device



Taiwan China Indonesia

Indonesia development zone



Indonesia



COSMO

Optoelectronic Device —Production Milestones



2001 listed on TWS

1995~1998 photo coupler/relay/Reed relay/full production line of solid state relay

1994 set up the factory in Yilan, get certified from ISO



2021 China-Huangjiang business established

2022 dedicate to electric field of car

1980s

1990s

2000s

2010s

2020s

2030s

2023-set up the factory in Indonesia
2024-Indonesia factory get certified from ISO

2010-2019 develop high performance products to adapt market trend

2003 new products release in succession
2005 china-set up the factory in kunshan, get certified from ISO

1981 approved by MOEA, then found cosmo electronics corp.



COSMO

光電元件產品—廠區分佈



Taiwan



Headquarter (New Taipei City)
Taiwan factory 1 (Yilan)
Taiwan factory 2 (Yilan)

China



China factory 1 (Kunshan)
China Business Operation
Office (Dongguan)

Indonesia



Indonesia factory
(Sukabumi)

Channel flows

Asia / Europe / Americas
Africa / Oceania



COSMO

Optoelectronic Products Application



光耦合器
PHOTO COUPLER



光繼電器
SSR-MOSFET OUTPUT



磁簧繼電器
REED RELAY



固態繼電器
SOLID STATE RELAY

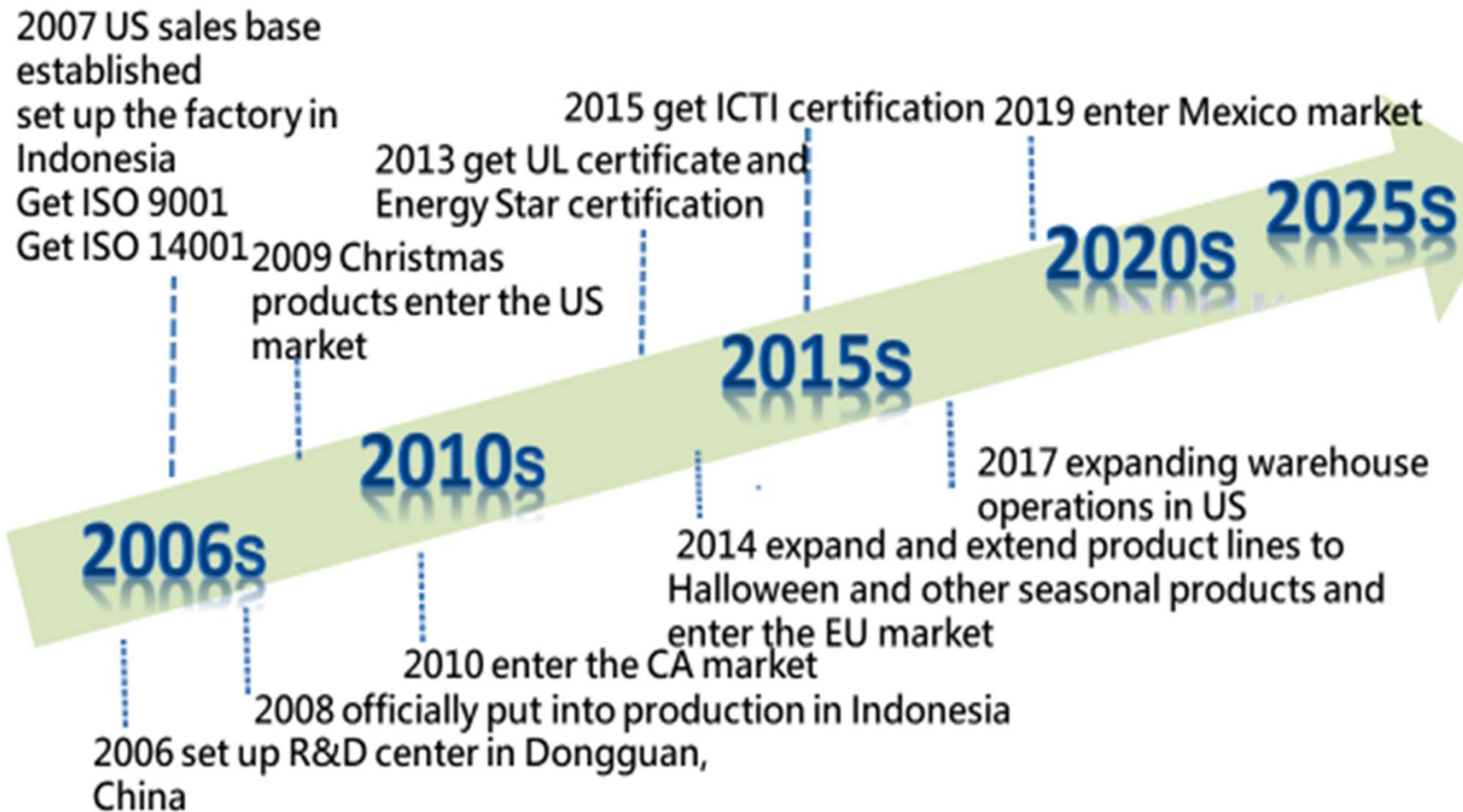
- Power switch
- charger
- appliance

- O/A machine
- sensor
- factory automation control

- LED lighting
- controller
- Battery management system



Decorative Lights Milestones



Decorative Lights—Factory Sites



Decorative Lights Factory in Indonesia



Location in Java and Indonesia



Sukabumi City (Indonesia)

Area	
• Total	48.33 km ² (18.66 sq mi)
• Water	4.815 km ² (1.859 sq mi)
Elevation	
584 m (1,916 ft)	
Population (mid 2022 estimate) ^[2]	
• Total	356,410
• Rank	37th, Indonesia
• Density	7,400/km ² (19,000/sq mi)

Sukabumi

[Article](#) [Talk](#)

From Wikipedia, the free encyclopedia

Sukabumi (*Sundanese:* ᮊᮥᮕᮔ᮪ᮒᮥᮕᮥᮒ) is a landlocked city surrounded by the [regency of the same name](#) (within which it is an [enclave](#)) in the southern foothills of [Mount Gede](#), in [West Java, Indonesia](#), about 100 km (62 mi) south of the national capital, [Jakarta](#).

At an altitude of approximately 584 m (1,916 ft), the city is a minor [hill station](#) resort, with a cooler climate than the surrounding lowlands. The area around Sukabumi is also a popular destination for [whitewater rafting](#). [Tea](#) and [Rubber](#) production is a major industry in the area. The suburban area surrounding Sukabumi circling the mountain has grown tremendously in population, such that northern [Sukabumi Regency](#), hugging the volcano, and bordering [Greater Jakarta](#), is home to the bulk of the [regency's](#) population.

The area of the city is 48.33 km², and the population at the 2010 Census was 300,359,^[3] while the 2020 Census was 346,325,^[4] the official estimate as at mid 2022 was 356,410.^[2] However, some 1.8 million people, as of the 2010 census figures, live in the surrounding metropolitan area. The bulk of the metro area population is unusual in that it forms a narrow southwest ring around Mount Gede. The eastern portion of the ringed population belt continues on into [Cianjur Regency](#).



Decorative Lights Factory in Indonesia

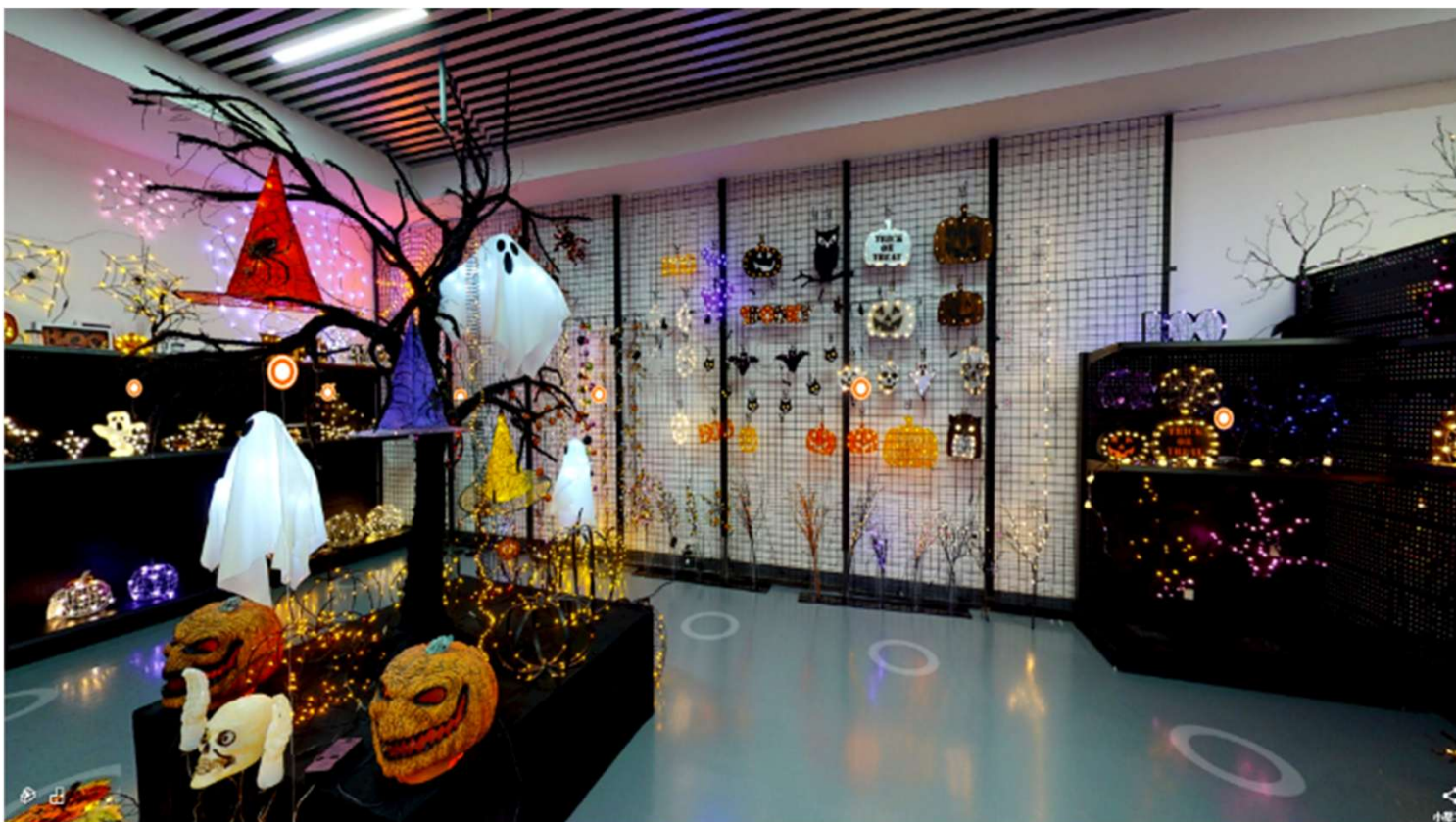


- Land area: about 12 hectares
- Factory area: about 8 hectares

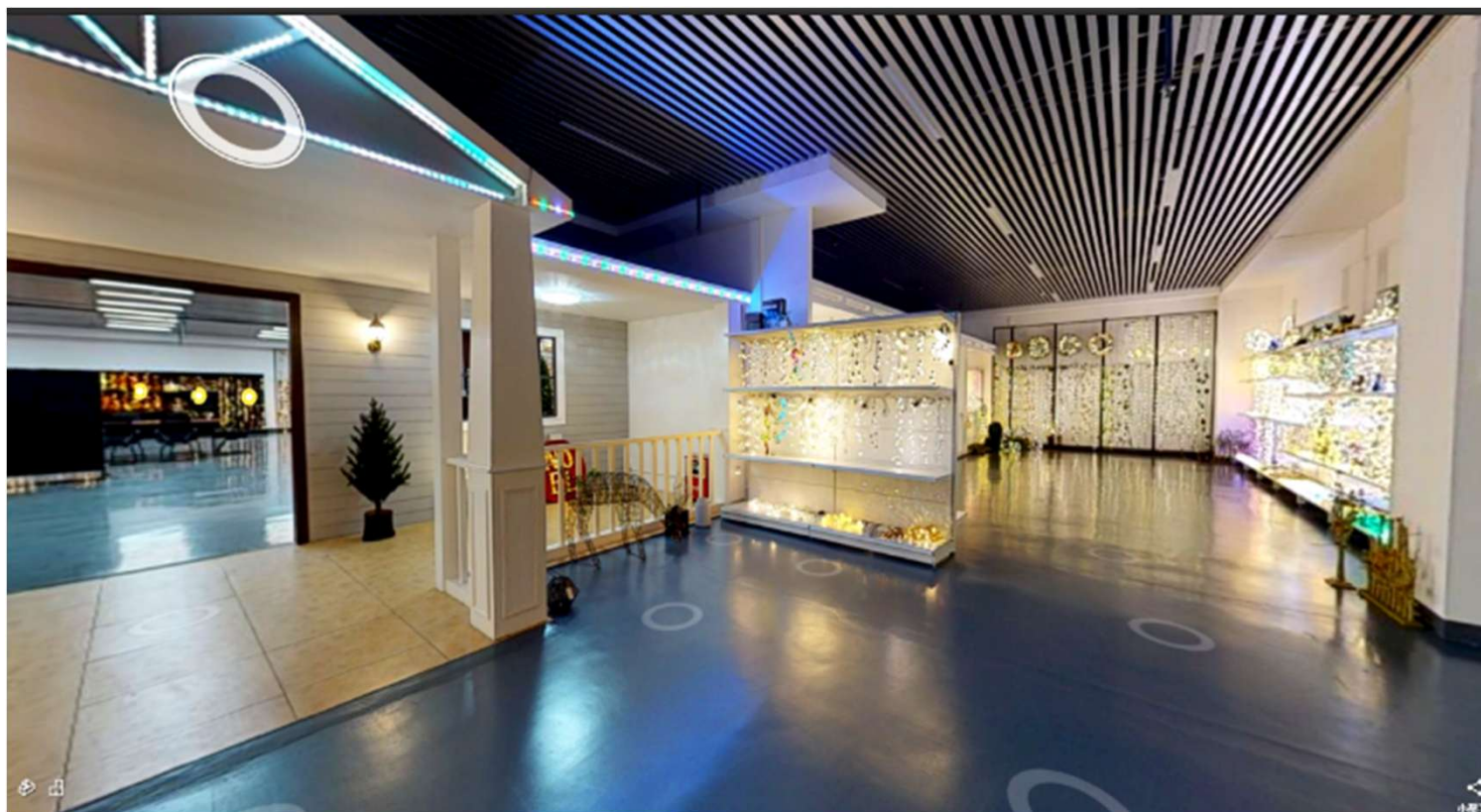
Christmas



Halloween/Harvest



Spring/Wedding



Financial Results



Consolidated Income Statement

Unit:NTDThousands

Item \ Year	2024	%	2024Q3	%	2025Q3	%
Revenue	1,107,072	100%	891,647	100%	832,277	100%
Cost of good sold	969,123	88%	767,830	86%	822,627	99%
Gross Profit	137,949	12%	123,817	14%	9,650	1%
Operating expenses	280,863	26%	211,248	24%	231,579	27%
Gain(Loss) From Operation	(142,914)	-14%	(87,431)	-10%	(221,929)	-26%
Income before Tax	(13,321)	-2%	(141,783)	-16%	168,984	21%
Net Income	(28,958)	-3%	(128,489)	-15%	169,279	21%
EPS(Unit:NTD dollar)	(0.17)		(0.75)		0.98	

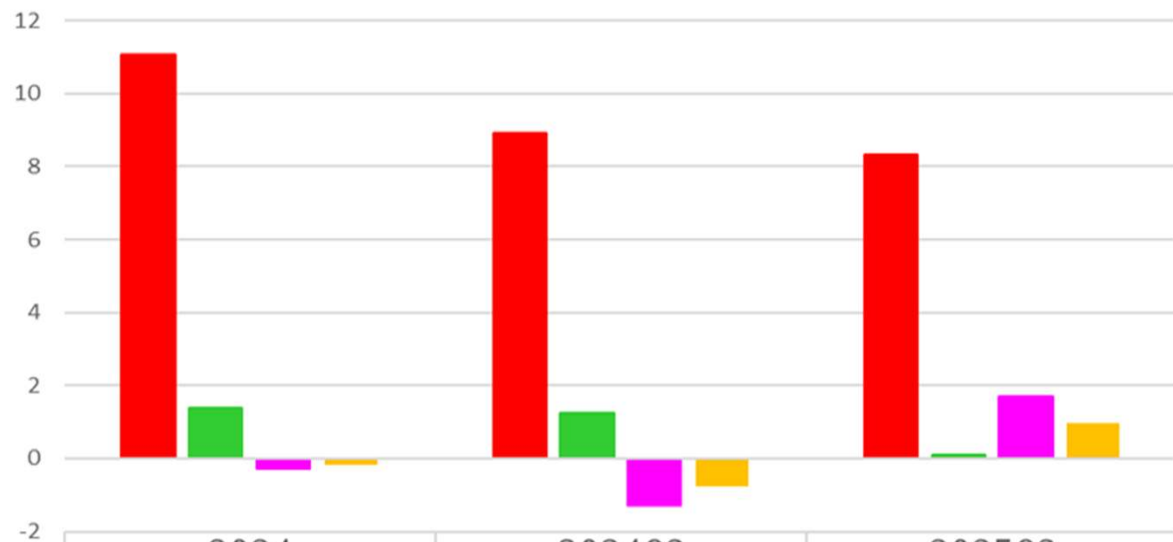


COSMO

Financial results



Consolidated Income Statement



	2024	2024Q3	2025Q3
Revenue(100 million)	11.07	8.92	8.32
Gross profit(100 million)	1.38	1.24	0.1
Net Income(100 million)	(0.29)	(1.28)	1.69
EPS(Unit:NTD)	(0.17)	(0.75)	0.98

■ Revenue(100 million) ■ Gross profit(100 million) ■ Net Income(100 million) ■ EPS(Unit:NTD)





Financial Results

Revenue by Products

Unit:NTDThousands

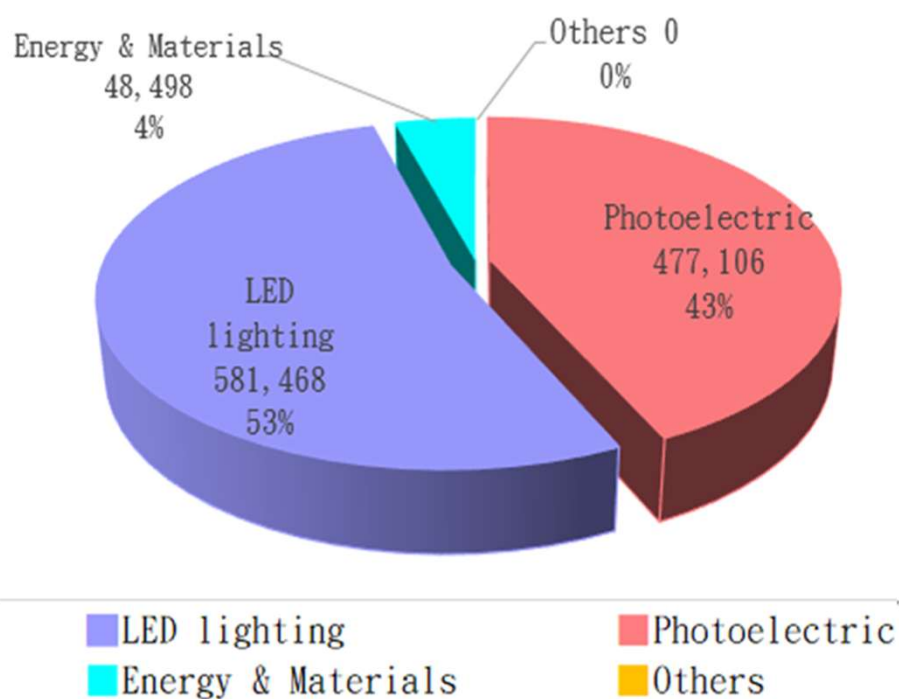
Item \ Year	2024	%	2024Q3	%	2025Q3	%
Photoelectric	477,106	43%	369,749	41%	270,361	33%
LED lighting	581,468	53%	485,258	55%	526,045	63%
Energy & Materials	48,498	4%	36,640	4%	35,871	4%
Others	0	0%	0	0%	0	0%
Total	1,107,072	100%	891,647	100%	832,277	100%



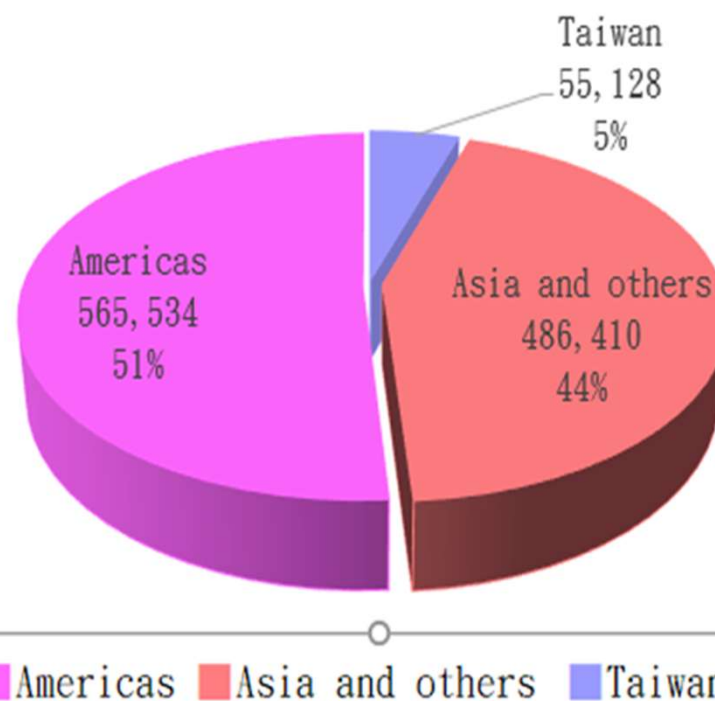
Analysis of revenue by products



structural analysis of Revenue
(products)-2024



sales region of products-2024



Unit:NTDThousands

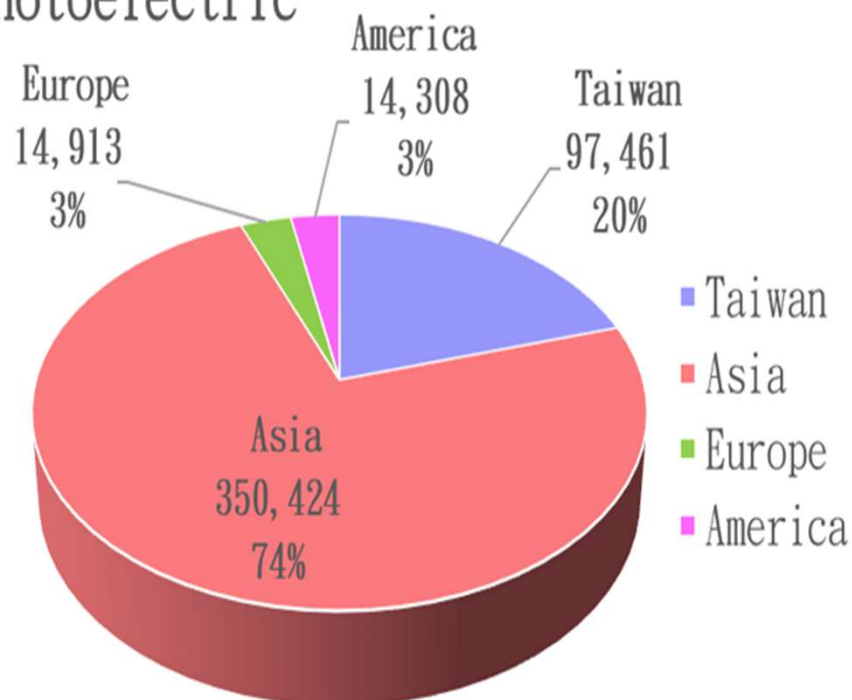


COSMO

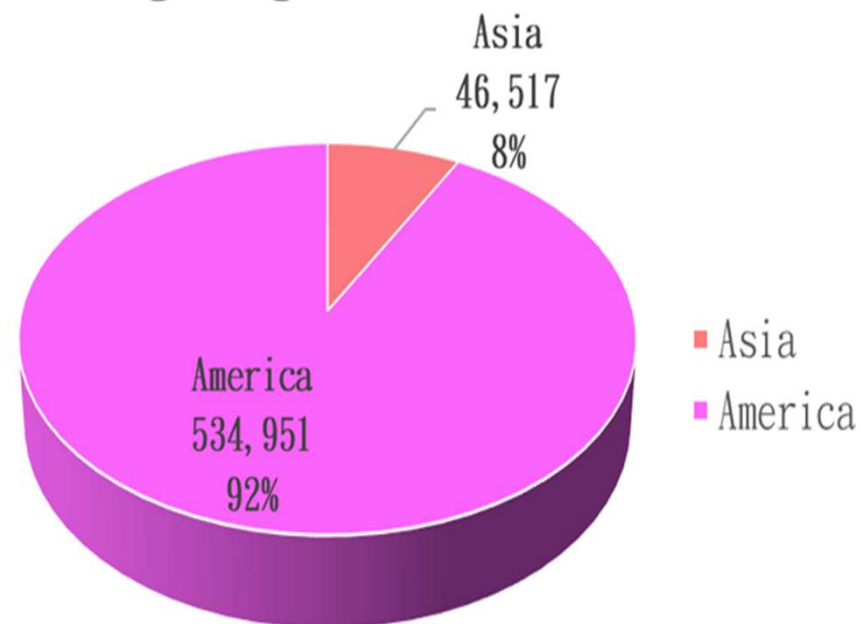
Analysis of revenue by region



Photoelectric



LED lighting



Unit:NTDThousands

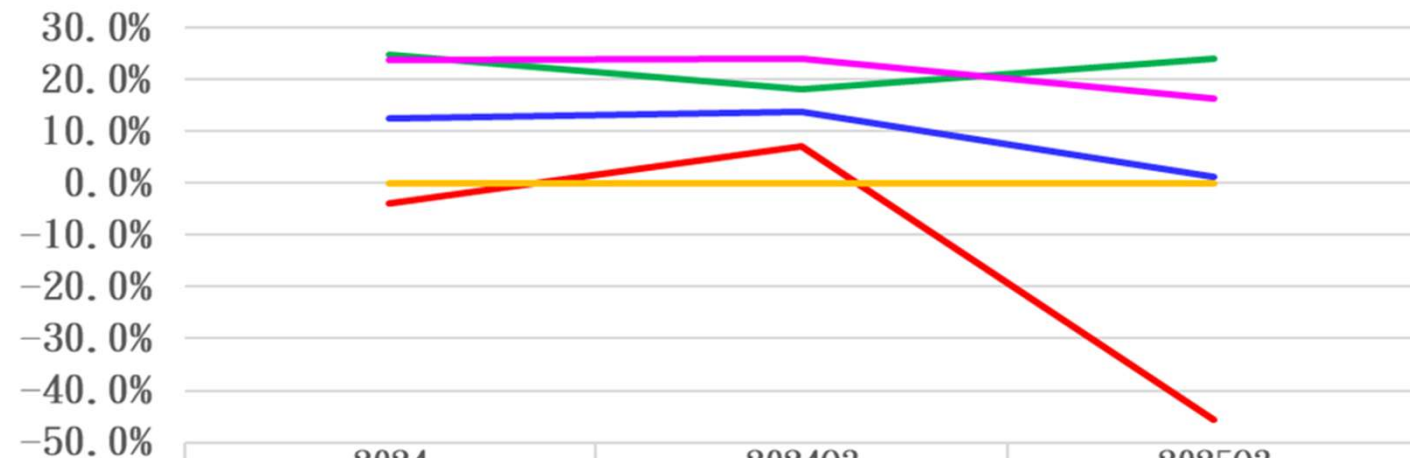


COSMO

Financial results



gross margin analysis of products

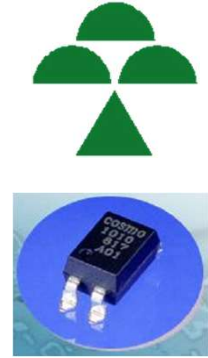


	2024	2024Q3	2025Q3
Photoelectric	-3.8%	7.2%	-45.6%
LED lighting	24.8%	18.2%	24.1%
Energy & Materials	23.9%	24.0%	16.4%
Others	0.0%	0.0%	0.0%
Total	12.5%	13.9%	1.2%

Photoelectric LED lighting Energy & Materials Others Total



Strategy & Prospect- Optoelectronic component



- Increase orders in the industrial control system and Electric vehicle markets
- Tap into 5G and automotive markets as business layout
- Improving manufacturing process to increase profit
- Invest in R&D of high-end products to increase the market share
- Obtain more OEM orders from famous brand
- Indonesia factory to start full production in 2025Q4



Strategy & Prospect- decorative lights



- Develop new products for diversification
- Develop outdoor Christmas lightings with strong sense of design and exquisiteness
- Improve service quality





Cosmo AI Transformation Era



■ Core

- Upgrading from Optocoupler Packaging to High-Speed Fiber Optic Modules based on decades of optoelectronics manufacturing expertise

■ Strategy

- Establish an AI Computing Power Center
- Targeting Fiber Optic Modules within the AI Server Supply Chain

Investment Environment in Indonesia



- **Economic scale**

Indonesia's Gross Domestic Product (GDP) reached \$1.4 Trillion U.S. Dollars, as the largest economy in ARF, the 16th largest in the world.

- **Population**

Indonesia's population is recorded as 280 million, the median age of the Indonesian population is around 30 years old. It is estimated to have large consuming capacity because of the tremendous domestic market and the high demographic dividend. Indonesia has huge potential in economic and trade investment.

- **Policy Support**

- 2020 Omnibus Law:
- Pioneer Industry tax relief



Indonesia Industrial Park - Location



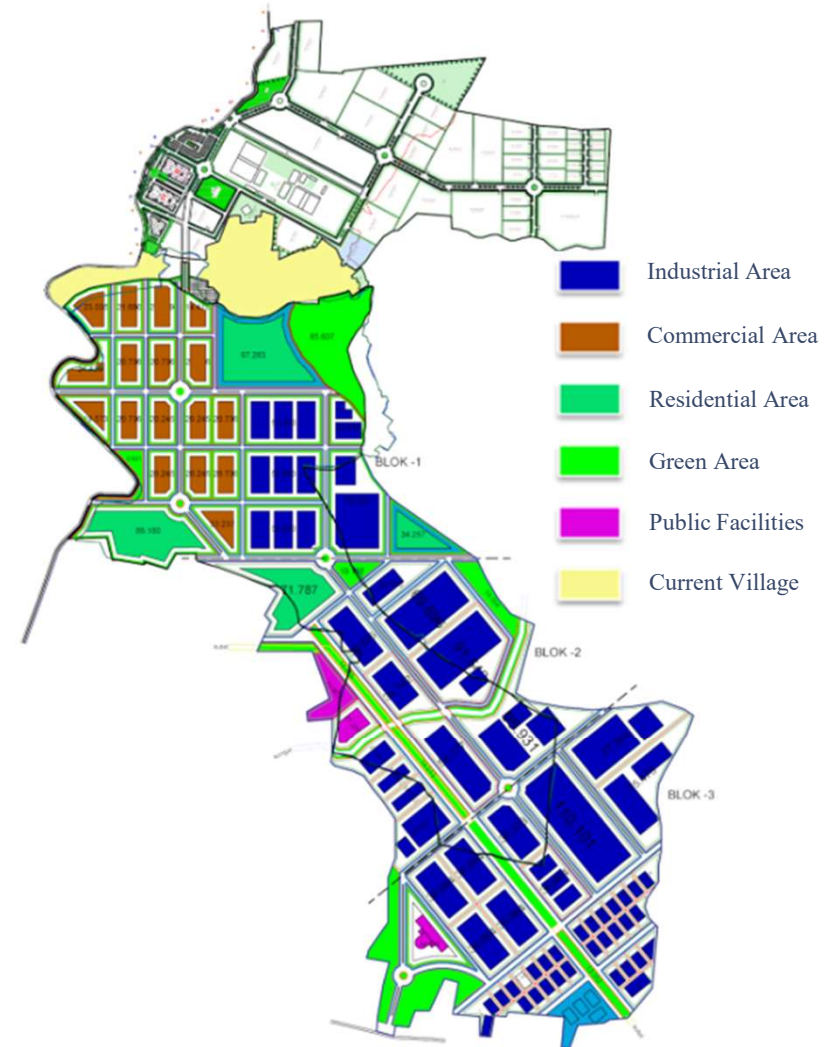
- Located in the southern part of West Java Province
- It takes about 2 hours to get to central Jakarta.
- It takes about 2.5 hours to reach Jakarta Soekarno-Hatta International Airport.
- It takes about 2 hours and 15 minutes to the largest commercial export port in Jakarta - Tanjung-Priok.



Master Plan



- The development zone is located in Zhikenbar Town, Sukabumi County, West Java Province, Indonesia.(INDONESIA Jawa Barat Sukabumi Cikembar)
- There are 3 industrial zones planned in this county:
First Industrial Zone (50 hectares)
Second Industrial Zone (300 hectares)
Third industrial zone (150 hectares)
- Our group holds the second industrial zone (165 hectares) and the third industrial zone (55 hectares). We have obtained relevant permits and land rights certificates, and have carried out planning, land preparation and public works construction in phases.
- The development zone will be developed into industrial, commercial and residential areas.



Industrial Park Planning



Industrial Area



Office Area



Commercial Area



Residential Area



Target Industry Introduction



Food Industry



Furniture Industry



Apparel & Footwear Industry



Auto Parts Industry



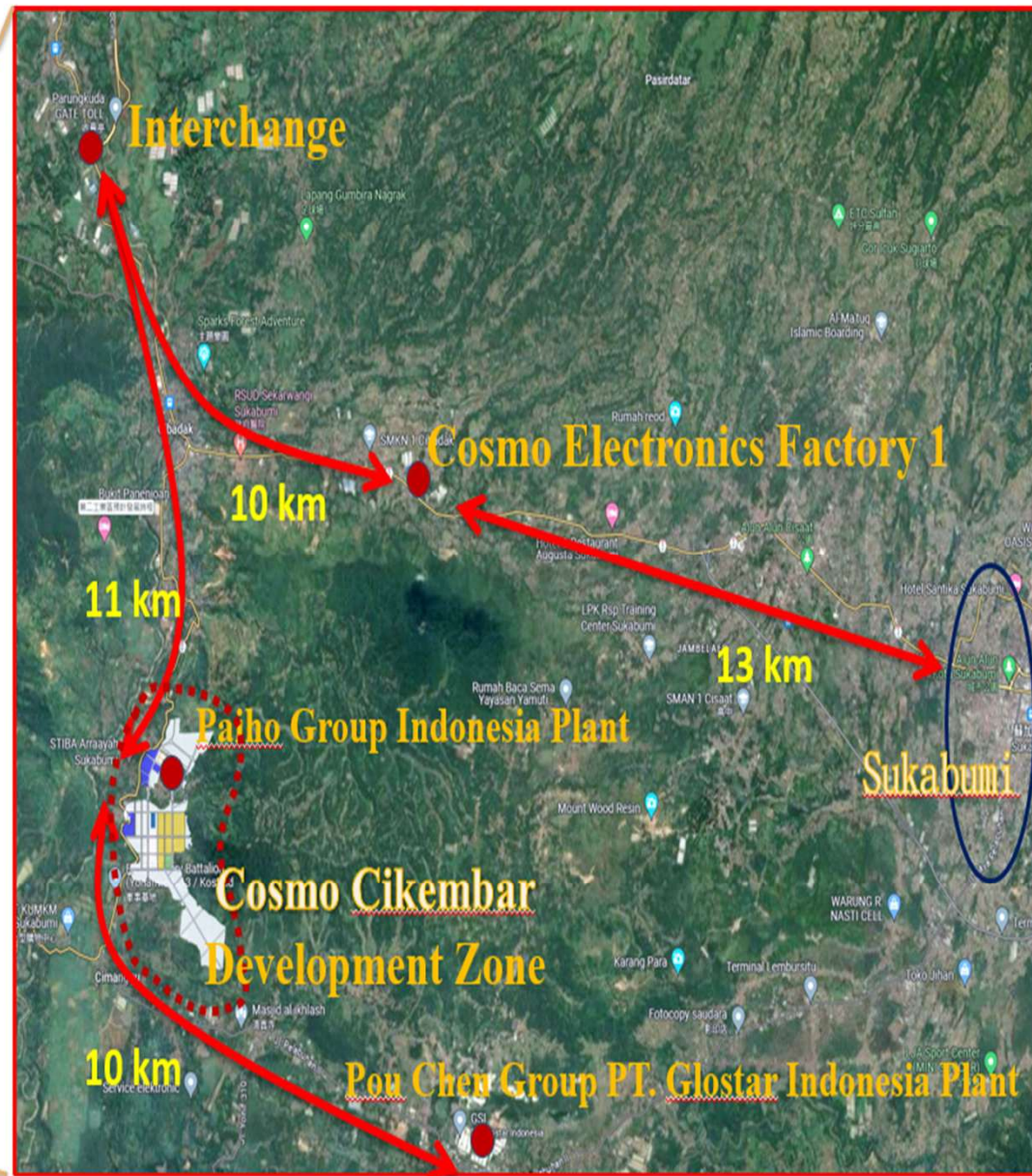
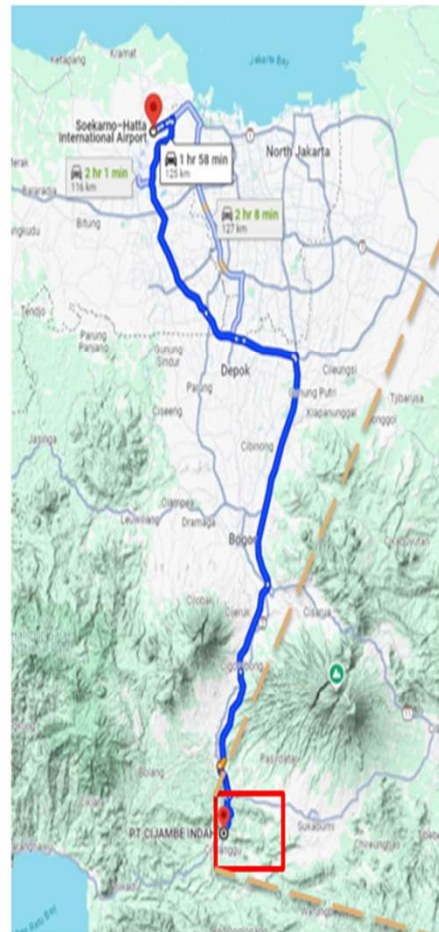
Electronics Industry



Other Industries



Sukabumi



COSMO



Advantage



- **Qualifications for applying industrial or manufacturing production parks with moderate or above pollution permit**
- **Low minimum wage**
- **Low electricity bill**
- **Low employee turnover and easy recruitment**
- **Factory setup assistance services**
- **Indonesia plant setup to mitigate geopolitical risks/maximize global reach**



Strategy & prospect- development area



- **Choose the suitable and reputable clients**
- **Negotiated sales agency to speed up sales**
- **All necessary industrial area documents completed**

Q & A



COSMO